



WELCOME TO THE MOSLEY ACADEMY 2024/25

Happiness

Respect

Independence

*Be the BEST that
→ YOU can be! ←*

Responsibility

Kindness

Honesty

ABOUT OUR SCHOOL

- The Mosley Academy is a thriving, village school with 211 children across Reception – Year 6 across 7 classes.
- We are a member of the John Taylor Multi Academy Trust within which there are 13 Primary schools and 6 Secondary schools, all of who work very closely together to ensure the best outcomes and opportunities for all of our children.



THE EARLY YEARS FOUNDATION STAGE (EYFS)

- The EYFS is the first National Framework in children's learning for children aged 0-5 years.
- The philosophy is that every child is unique and that they should be provided with an environment and opportunities that enable them to build strong relationships to be independent learners.
- These principles fall under
 - A unique child
 - Positive relationships
 - Enabling environment
 - Learning and development
- At Mosley, every child is valued and we believe in developing the 'whole' child. We believe that children's wellbeing and their development of social and emotional skills is just as important as their academic progress.
- For more information on the EYFS, please visit the school website where you will find a parent guide.

INTENT FOR EYFS AT MOSLEY

Vocabulary
rich

Ready to
learn

Happy
learners

Active
learners

Awe and
Wonder

Hands-on
approach

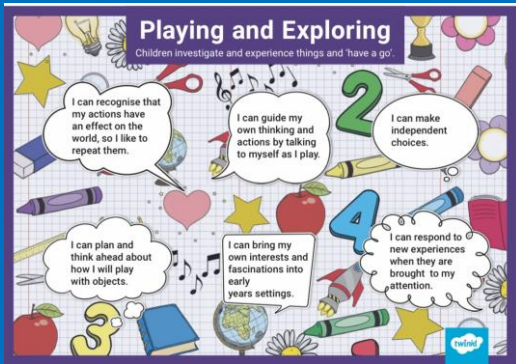
Text
Based

Love
Learning

Play
based

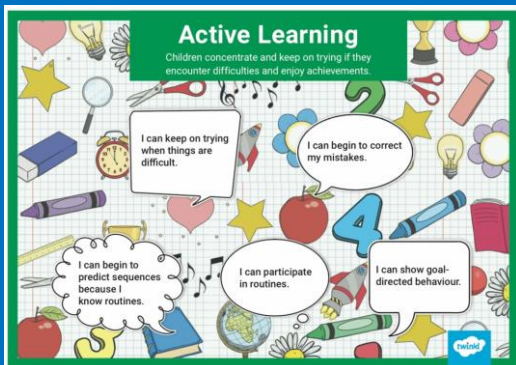
Child-
centred

- **Characteristics of Effective Learning** are a key part of the EYFS curriculum. These important skills are crucial to how a child learns.



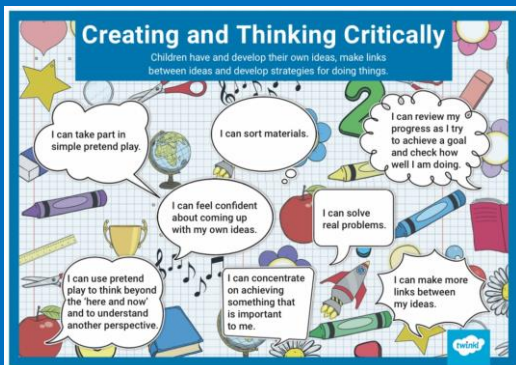
- **Playing and exploring** focuses on how the child:

- Plans and thinks ahead
- Is guided by their own thinking and actions
- Makes their own independent choices
- Responds to new experiences and has their own interests and fascinations
- Is willing to 'have a go'.



- **Active learning** is all about how a child:

- Displays goal-directed behaviour
- Participates in routines and gets to know these routines well
- Begins to correct their mistakes and perseveres when they find something difficult.
- Enjoys achieving what they set out to do



- **Creating and thinking critically** looks at how a child:

- Takes part in pretend play and uses play to think beyond the 'here and now'
- Has their own ideas and solves real life problems
- Makes links between ideas
- Choosing ways to do things

- The EYFS is made up of 7 areas of learning and development that are identified as Prime or Specific areas.

- **Prime Areas**

- Personal, Social and Emotional development
- Physical development
- Communication and language

- **Specific Areas**

- Literacy
- Mathematics
- Understanding the world
- Expressive art and design



These areas are split further into different strands making 17 areas in total that we assess against at the very end of the Reception year.

An Early Years Journey



THE 'DONALDSON' CLASSROOM

(ALL OF OUR CLASSES ARE NAMED AFTER OUR CHILDREN'S FAVOURITE AUTHORS!)

Play has a **vital role** in learning and our provision is designed to encourage the children to be 'Active learners'. It encourages independence, free choice, decision making and all the 'Characteristics of Effective Learning'.

Children learn best when it is 'hands-on' and when we provide first-hand, real-life experiences that are inspiring and exciting. Play provides children with the chance to explore ideas, express emotions and apply new learning in different situations.

Our environment is the third teacher!



OUTDOOR LEARNING



- Outdoor Learning is a key focus in our school and we are very proud of the opportunities that we can provide for our children throughout the year.
- Donaldson Class take part in Outdoor Learning sessions every week with Miss Twells and Mrs Weston
- Children are provided with waterproof puddle suits at school but parents will need to ensure children are still bringing their coats/layers in colder weather – Our outdoor learning activities happen in all weathers (excluding extreme forecasts)
- We ask parents to please provide your child with a pair of named wellies that can be brought in from day one, and kept in school all year round

CURRICULUM

- Our EYFS curriculum is an exciting and flexible curriculum that aims to meet the needs of all our children.
- Best practice is to deliver the curriculum intent (our objectives) through engaging topics that the children are interested.
- We use open ended question style topics that follow the interest of the children.
- Curriculum covers all the prime and specific areas of learning and also include PE, Music, PSHE and Computing.
- Our curriculum allows for a broad range of learning opportunities where the children can apply the skills they have learnt in a variety of ways. It makes sure that their learning is connected to real life experiences.

A TYPICAL DAY IN RECEPTION

- 8:40 – 9 am – Register and morning task
- 9:00 – 9:20 – Phonics
- 9:20 – 10:10 – Play/Choosing (+Guided Group Work)
- 10:10 – 10:30 – Snack time
- 10:30 – 10:45 – Literacy
- 10:45 – 11:20 – Play/Choosing (+Guided Group Work)
- 11:20 – 11:45 – Maths
- 11:45 – 12:50 – Lunch time
- 12:50 – 13:15 Register and afternoon input
- 13:15 – 14:00 – Play/Choosing (+activity relating to the input)
- 14:00 – 14:20 – Snack time and second input of the afternoon
- 14:20 – 15:00 – Play/Choosing (+activity relating to the input)
- 15:00 – 15:20 – Story and home time



UNIFORM (PLEASE LABEL EVERYTHING!)

- Our uniform procedure is available on the website
- Children DO NOT require rucksacks/backpacks – LOGO bookbags only in Reception please
- Children will play outside in almost all weathers – please ensure they have a waterproof AND warm coat
- We expect all children to wear grey trousers / skirts / pinafore dresses
- White polo tops / shirts
- Royal blue LOGO jumper / cardigan
- Black socks / white socks / grey tights
- Black shoes (NOT TRAINERS) or smart ankle boots (in colder weather)
- On PE days, children come to school dressed in their kit which consists of;
- Black trousers / leggings / shorts / skirt
- Royal blue LOGO t-shirt
- Black / white socks
- Trainers for outdoor sports
- Children may wear a LOGO school fleece / sports hoodie on colder PE days too
- Jewellery is not permitted to be worn (excluding religious articles which we ask parents to inform us in advance of)
- Hair should be tied back at all times.



PE (PLEASE LABEL EVERYTHING!)

- We will let you know what day Reception children will have their PE lessons
- Children should come to school dressed in their PE kits on PE day
- Please ensure all jewellery is removed and left at home on PE days*
- We require ALL children to remove earrings themselves prior to PE lessons; adults cannot support with this
- We strongly encourage parents NOT to get their children's ears pierced until the start of the Summer Holidays so that adequate healing time is allowed before children begin PE lessons again in September
- We do not allow taping of earrings
- Long hair must be tied back



* Religious articles are excluded but discussions with the headteacher and PE subject lead must take place to ascertain appropriate health and safety precautions prior to PE lessons

SCHOOL LUNCHES



- Our catering provider is Mellors and they provide carefully selected meals that are nutritionally balanced and based on the likes/dislikes of children in school
- Children in Reception-Year 2 are entitled to receive a Universal Free School Meal (this is not a means tested benefit and is open to all)
- Example menus are available on our website here: [download.asp \(themosleyacademy.co.uk\)](https://www.themosleyacademy.co.uk/download.asp)
- Please talk to your child about the foods they do and don't like and encourage them to try new things
- Where possible, look over the menu before school each day and chat with your child about what they will choose to have at lunch
- If your child has any allergies, we MUST be made aware of these prior to your child starting school in September
- We strongly encourage parents to take advantage of the UFSM offer so that children have access to a broad range of food types and meal choices
- We are a NUT FREE environment and do not allow nuts of any type or in any form in school





OPAL

- Outdoor Play and Learning
- Amazing play, every day for every child
- Children spend 1.4 years at play during lunchtimes over the 7 years at primary school
- Use whole school environment
- Tyres, cardboard boxes, noodles, pipes, crates, den building...We need loose parts all the time! Any donations greatly fully received too.



“

OPAL is amazing! We have a brilliant time at playtimes with so much to do!”

SNACKS

- At Mosley, we follow Public Health Agency's guide to health snacks. This is available here: [download.asp \(themosleyacademy.co.uk\)](https://www.themosleyacademy.co.uk/download.asp)
- We insist that children only bring fruit, vegetables, cheese or PLAIN bread-based snacks in from home
- Where children bring in snacks that are not in line with this Government guidance, staff may encourage them to leave this in their bag to have after school and will offer a healthy alternative (such as fruit) instead
- Children in Reception - Year 2 all receive a piece of free school fruit, provided by the Government fruit scheme
- Children must only have water in their bottles, no juice/flavoured water/fizzy drinks
- Children are also offered milk everyday from school



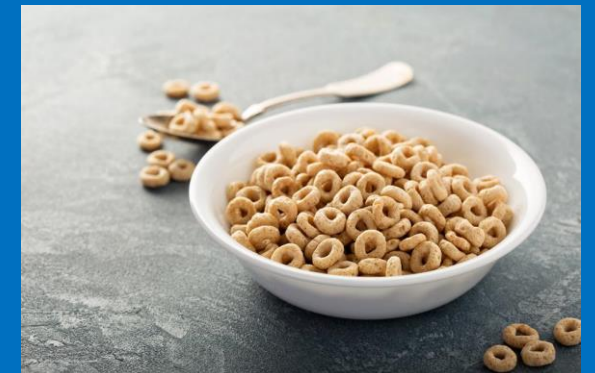
TOILETING

- If your child is not confidently 'toilet trained' please speak to a staff member to inform us of this before your child starts school
- We encourage parents whose children have accidents more regularly to provide us with named, additional underwear/clothing to keep in school
- At Mosley, we have a noncontact intimate care procedure, details of which are available here: [download.asp \(themosleyacademy.co.uk\)](https://www.themosleyacademy.co.uk/download.asp)
- In the event of a toileting accident (which happens to all children from time to time and is nothing to worry about) staff will verbally guide children through cleaning and changing themselves
- If a child becomes distressed or is in a state that they're unable to sort themselves, we will call parents to attend school
- Please help (teach) your child to wipe their own bottom ready for starting school and encourage good hand washing.



BREAKFAST CLUB AND AFTER SCHOOL CLUBS

- Breakfast Club operates daily from 8am and is bookable via WeEduc. Cost per session is currently £3.50. Children are offered a choice of cereal and/or toast and a drink each morning and have a choice of play activities. Breakfast club takes place in the hall with children from all year groups and is staff led by our dedicated school staff.
- We offer a wide choice of after school clubs (and some lunchtime clubs) for our children at Mosley with a mix of staff led clubs and externally led clubs. External clubs and some school run clubs incur a small cost due to staffing and materials. Options and booking details are released at the beginning of each term.



COMMUNICATION

- Miss Twells will send out a class newsletter filled with information about what your child has been learning each week.
- Children will have their learning journeys recorded on TAPESTRY. We strongly encourage parents to engage regularly with their child's TAPESTRY account, adding likes/comments to school recordings and uploading your own WOW moments from home – we love to celebrate these with the rest of the class!
- The whole school receive a weekly newsletter from Mrs Rowe informing of forthcoming events, information, diary dates etc. This is sent via WEDUC and on the website.
- Each Friday, we hold a 'Celebration Assembly' where children are awarded certificates. Children are welcome to bring in awards received outside of school (swimming certificates, sports awards, Rainbow/Cubs awards etc) too and teachers will present these to your child in front of the whole school!
- Parents Evenings are held twice yearly – once in Autumn term and again in Spring term
- End of year reports are sent in July and will report on your child's progress against the Early Learning Goals

KEY DATES – AUTUMN TERM

- 3rd September – School starts
- 27th September - Phonics Workshop (9-10am followed by Teas and Coffees)
- 23rd October – Parents Stay and Play Outdoor learning Session (2-3pm)
- 24th Oct – 4th Nov Half-term (25th October is an inset day)

SCHOOL READINESS

- Talk about the things that will happen on the first day e.g. Miss Twells will show you your coat peg and tray when you arrive.
There is a lovely 'EYFS Welcome booklet' on our website that will support these conversations too
- Ensure your child feels comfortable with the different parts of the day and knows what to expect e.g. using the toilet, washing their hands and eating dinner in the school hall.
- Encourage your child to know and recognise their full name
- Encourage your child to begin writing their name and forming letters correctly.
- Practise putting on their school uniform and PE kit a few times before the big day
- Practise identifying which shoe is LEFT and which shoe is RIGHT
- Learning how to share, remember their manners and get to know other children
- Practise tidying away their own things independently
- Practise using scissors and building up their motor skills
- Use a knife and fork to eat their dinner (adults will always be there to help cut up food for children)
- Wipe their own bottom after going to the toilet.

Have you got
a pre-school child?

Are they

Ready for School?

If pre-school children can:

- Learn and play
- Talk, listen carefully and follow instructions
- Go to the toilet and wash their hands...

...they'll be off to the best possible start.

We can help you make sure your child is ready for school.

www.derbyshire.gov.uk/readyforschool

READY FOR SCHOOL
IN DERBYSHIRE



The 10 keys for unlocking school readiness*

- I can settle happily without my parent or carer
- I can tell grown-ups and friends what I need
- I can take turns to play and share when I'm playing
- I can go to the toilet on my own and wash my hands
- I can put on my own coat and shoes and feed myself
- I can tell a grown-up if I'm happy, sad or cross
- I know that what I do and say can make others happy or unhappy
- I am curious and want to learn and play
- I can stop doing what I'm doing, listen and follow simple instructions
- I enjoy sharing books with grown-ups

www.derbyshire.gov.uk/readyforschool

READY FOR SCHOOL
IN DERBYSHIRE

*If a child is developing typically for their age

DAY ONE



- Ensure you're on time, school begins at 8:40am
- Remember your school bag, a named water bottle and named snack
- Ensure your child does not bring any cuddlies/toys into school – we know how upset they would be if they got lost or damaged
- Please make sure no cosmetics / trinkets (such as lip balms and key rings) are secretly packed in their book bag
- Give them a HUGE hug and the biggest smile you can
- Tell them they're going to be great- because they are!
- Let them walk into school independently wherever possible

KEEPING IN TOUCH

- At Mosley we use the messaging service 'WeEduc' to keep you up to date with everything that is happening in school. Please ensure the school office has your most up to date phone number so that you can use this service. You will need to download the app WeEduc and search for our school. You will then receive the messages in September. Speak to the office if you need help with this.
- We are a paperless school and so all letters are uploaded to the school website or WeEduc.
- 01283 247465 or office@mos.jtmat.co.uk
- [The Mosley Academy - Home](#)

WE CAN'T WAIT TO SEE YOU IN SEPTEMBER!



Happiness

Independence

Be the BEST that

Responsibility

Honesty

Acceptance

» YOU can be! «

Kindness