



FRIDAY 3RD OCTOBER 2025

NEWSLETTER



MOSLEY 4 RS AND VALUES

As a reminder, our Mosley R's are:

- ready
- respectful
- responsible
- restorative.

Please support school with talking to your child about these at home too.

Our school values are:

- Kindness
- Acceptance
- Independence
- Honesty
- Resilience and last but certainly not least, happiness!

WELCOME!

Friday 10th October is World Mental health. If you or your child would like to support this day in school, we are asking that children wear a touch of green or yellow with their school uniform for a small donation to Young Minds. As part of our support for children's mental health we have invited Staffordshire Stay Well team to school to talk to groups of children about wellbeing, anger management and a few 1 to 1 sessions. Clare will be in school for 4 days over 4 weeks working with children to support mental health and wellbeing. If anyone would like any advice or support for your child, please see the link below. This includes a referral process to access one to one support.

In school we have our ELSA provision, led by Mrs Kavanagh our trained ELSA. Miss Smith has also just started her training so in a few months we will have two trained ELSAs in school. If you feel your child needs additional support for their mental health and wellbeing please do talk to us. We may not be able to provide ELSA sessions immediately as we do have a waiting list of support, however please do just come and talk to us with any concerns you may have.



African Drumming

A big thanks to the PTFA for funding the African Drumming experience for the whole school on Monday. We will share photos and videos via Instagram next week

Netball

Well done to our netball team who played at Shobnall last night. Thanks to Mrs Ingham for taking them and championing them all so well. Next week our Year 5 footballers will be venturing to Rykneld. Thanks in advance to Mr Carvell for attending and coaching the team!

Label school uniform please

We are seeing increasing levels of lost school uniform. Please label everything!

We have a second hand uniform bank in the main school office so if you do need any spare uniform (free to a good home- or a small donation if you prefer to the PTFA) then please just pop along and collect what you need. Please can we also remind you that coats are needed in school every day as the weather begins to turn cooler. School shoes must be worn inside, not trainers unless it is a PE day. Small studded, plain earrings only and long hair tied back every day please. We ask that only basic watches are worn to school, ideally not smart watches due to the cost if they get damaged or lost. If phones must be brought to school then they must be handed in to the school office immediately. If children do not need a phone straight after school, please do not send them in.

Thank you.

Mosley Hens

One of our Mosley Hens, Pepper, is hoping to hatch 6 baby chicks. Please do not open the egg coop when you are popping to say hi! We have bought 6 special eggs from Paige's Poultry this week so now we wait for 21 days and hope to see 6 baby chicks right at the end of this half term!

School car park

The school car park must not be used by parents please. We have witnessed parents entering the school car park at speed and using it as a turning area. Please can we respectfully remind you this is for staff and visitor cars only.

We have also had repeated reports of parents parking illegally in the village. Please think about the safety and care for all of our Mosley children and families. The darker nights and on well on their way so please drive and park carefully and respectfully.

Inset day reminder- school closed to children on Friday 24th October. Back to school on Monday 3rd November

PTFA Glow Disco on Thursday 6th November. More details to follow.

Parents Evening

We will shortly be sending out the parents evening booking links via MCAS. Parents evenings are on Monday 20th and Tuesday 21st October after school. Year 4 parents evenings will only be on Monday 20th. Mrs Baxter will speak to parents separately for those who are unable to make Monday 20th.
Thank you.

Prospective families tour for September 2026

Availability is limited on each of the tour dates with the first date already full. We have added two more dates...Friday 28th November 10am & 2pm and Tuesday 9th December 9.30am & 2pm
Please share our tour dates with your friends and family and on your own social media platforms.
Thanks so much!

Harvest Festival Celebrations

On Thursday 23rd October we will be having our Harvest Festival Celebrations. Reception & KS1 will be at 9am and KS2 will be at 2pm, please join us for the celebrations. Remember to bring in your donations, all Harvest Donations will go to Burton Hope.

School Christmas Panto

We have decided to invite a theatre company in to school this year instead of going to Lichfield Panto. The whole school will enjoy a performance of Dick Whittington on our very own Mosley Stage in December. We have had a number of families over previous years who raised concerns around the cost of the Lichfield Garrick/ Derby Theatre trip at an already costly time of the year. Some families unfortunately refused to pay, with the cost then falling to the school. We have therefore decided to alternate between an in-school panto and a trip to the theatre. We will try it this year and review - any feedback on this we are of course happy to listen to.

The cost of the panto visit will be £4 per child which just covers the cost of the theatre company. We will add this to each child's MCAS account nearer the time

Christmas Nativity Dates

Christmas Nativity dates will go out on next week's newsletter.



ATTENDANCE THIS WEEK

Reception 99.1%

Year 1 -98.1 %

Year 2 -99.1 %

Year 3 -98.4 %

Year 4 -96.4 %

Year 5 -99%

Year 6 -98.2%



Attendance awards

Every week, we celebrate the winning class for the highest attendance. You can see the results each week on the newsletter. The winning class is announced in class by Mrs Taylor each week on a Friday and get to enjoy 5 minutes extra playtime. We also now have a lovely Helpful bear kindly donated by the Staffordshire Little Heroes campaign. Helpful bear will also stay with the winning class each week and enjoy a week of learning in the class with the highest attendance!

Congratulations to Reception and Year 2 this week with 99.1% attendance!

This week's stars are:



Reception - Noah

Year 1 - Miya

Year 2 - Roman

Year 3 - Willow J

Year 4 - Freddie

Year 5 - Leo P

Year 6 - Alice

Well done to you all!



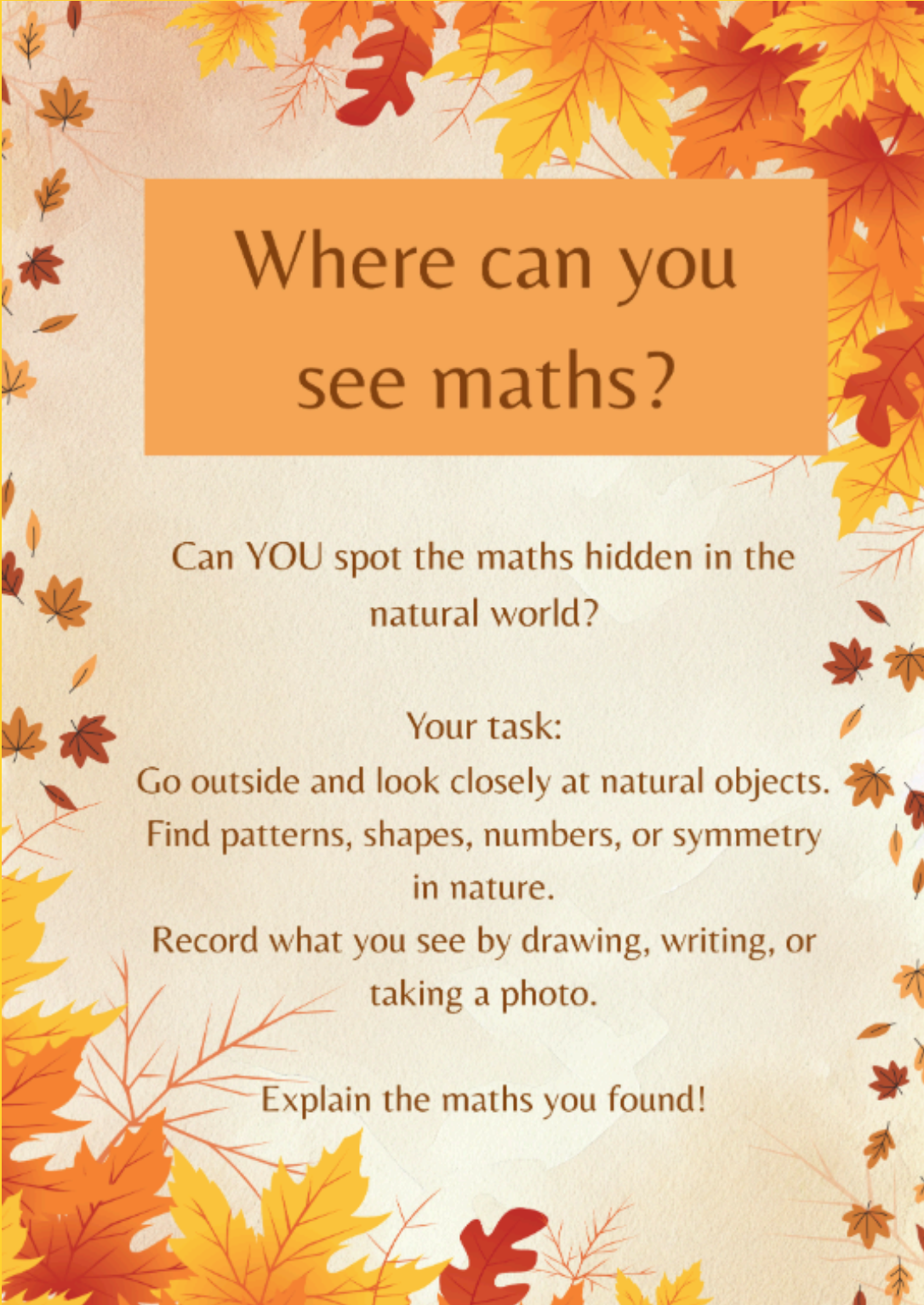
MATHS SUBJECT EXCELLENCE PROJECTS

We have been asked to take part in a Maths Subject Excellence Project, along with other Trust schools. The project involves maths in the natural world.

We will be using your home projects to create a new maths display in school to show your creativity and maths knowledge. We will then submit one entry per key stage to the JTMAT panel for judging.

The prize for the 'Where can you see maths?' project is a nature hamper, including a growing kit and bug hotel, to keep in school.

Submissions should be made to your child's class teacher by Friday 17th October. We look forward to seeing your ideas!



Where can you see maths?

Can YOU spot the maths hidden in the natural world?

Your task:

Go outside and look closely at natural objects. Find patterns, shapes, numbers, or symmetry in nature.

Record what you see by drawing, writing, or taking a photo.

Explain the maths you found!

DATES

<p>Monday 6th October Whole School African Drumming Workshop</p>	<p>Tuesday 7th October Year 6 to Laches Wood (return Friday 10th October)</p>	<p>Friday 10th October Wear a touch of yellow or green for Mental Health Day</p>
<p>Thursday 16th October -Prospective parent tours – please book on at the office - pm</p>	<p>Monday 20th October - Year 5 Bikeability Parents Evening</p>	<p>Tuesday 21st October Parents Evening</p>
<p>Wednesday 22nd October -Year 5 Bikeability -Reception Stay and Play session - 2pm</p>	<p>Thursday 23rd October - Reception and KS1 Harvest Festival – 9am - KS2 Harvest Festival – 2pm. Please join us for these celebrations! Break up for half term</p>	<p>Friday 24th October - Inset – School closed to pupils School reopens on Monday 3rd November</p>
<p>Wednesday 5th November -Year 5 trip to Burton fire station (more info to follow)</p>	<p>Thursday 6th November - PTFA Glow disco after school</p>	<p>Friday 14th November - Children in Need</p>

DATES

Monday 17th November - Bikeability Y6 all week	Wednesday 10th - Friday 12th December -Year 5 Whitemoor Lakes residential	Friday 12th December - Christmas Jumper Day
Friday 19th December Break up for Christmas Break. Children return to school on Tuesday 6th January		



The Mosley Academy

"Be the best that you can be!"

Do you have a child starting school
in September 2026?



Join us for one of our
OPEN DAYS!

16th October 2025 at
1.30pm or
12th November either
9.30am or 1.30pm

All events include a guided
tour of school and chance to
meet the staff team

Call 01283 247465 or email mos-office@mos.jtmat.co.uk
to book a place. Children are welcome!

*"We believe in the value of play and giving our
children the very best start in Early Years."*

Sarah Rowe, Headteacher.

The Mosley Academy, Main Street, Anslow, DE13 9QD. www.mosleyschool.co.uk





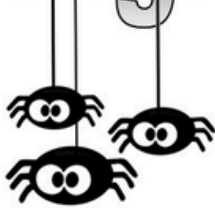
Environmental
Education
Project

at Rosliston Forestry Centre



**wildlife
watch**

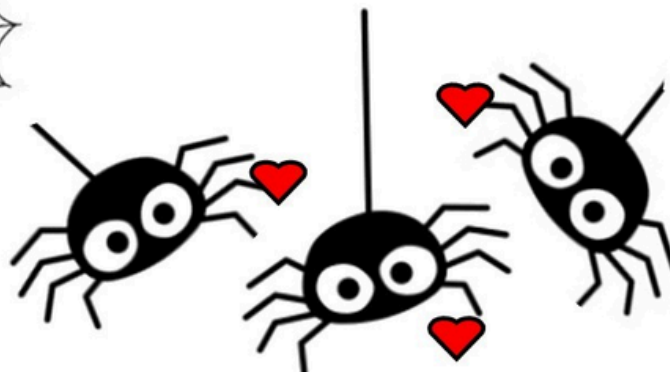
Eight legged friends



at Rosliston Forestry Centre

Tuesday 28th October

Drop in 2-4pm



Join the Environmental Education Project team in the forest classroom and learn all about how useful spiders are in nature and your home. Make a spider web decoration to take home. Suitable for families

Cost: £3 per child. Booking recommended.



For more info/book : Email
rosliston@southderbyshire.gov.uk
or call 01283 535039



EnvironmentalEducationProject



Find us on:
facebook.

Environmental Education Project
at Rosliston Forestry Centre

Christmas Wreath making Workshops

Saturday 22 & Monday 24 November
2 workshops each day 10-12pm or 1pm-3

£25 per person. Booking essential.

Please book early to avoid disappointment as this is
a very popular activity.



Make a sustainable wreath from
natural materials including a
willow frame, with the guidance
of members of
The Environmental Education
Project team. Suitable for adults
& older young people 12+



www.roslistonforestrycentre.co.uk

rosliston@southderbyshire.gov.uk

01283 535039 (answerphone)

Rosliston Forestry Centre, Burton Road, Rosliston, Swadlincote,
Derbyshire DE12 8JX



EnvironmentalEducationProject



Find us on:
facebook.

Environmental Education Project
at Rosliston Forestry Centre