



The Mosley Academy Newsletter

Friday 13/06/2025



**HAPPY
FATHER'S
DAY**

Father's Day Lunch (KS2)

Thank you to all the Dad's/Grandad's who came to celebrate Father's Day with us at lunchtime.

It was lovely to see all of our children enjoying lunch with Dad's/Grandad's. A big thank you to everyone for following our timetable, it makes it so easy for our kitchen staff and our lunchtime supervisors to help the event run so smoothly.

A big thank out to our wonderful kitchen staff and lunchtime supervisors for supplying a delicious lunch and making it a fantastic and special occasion.

Happy Father's Day!

Class Arrangements for September 2025

We would like to announce our teaching team ready for September!

Reception - Miss Twells

Year 1 - Mr Mellor

Year 2 - Mrs Ingham

Year 3 - Mrs Kirkman

Year 4- Mrs Baxter

Year 5- Miss Luce

Year 6- Mrs Claxton/ Mrs Day

Mrs Eggleston will be retiring in October so will be covering PPA until then across the school. Enjoy your last half term in the teaching profession!

We are currently recruiting for teaching assistants and will let you know towards the end of the school year which TA's will be supporting your child's class, once this has been confirmed. Each class may have more than one teaching assistant throughout the week depending on children's needs in school.

Summer Fayre & Sports Day

Everyone is looking forward to Sports Day and the Summer Fayre on Friday 20th June. We have a Sports Week to look forward to before the actual Sports Day on Friday, so don't forget it's PE kit every day next week.

A big thank you to everyone who brought in a donation for our tombola, we were blown away by your generosity, thank you!

If you are unable to help out on the day, we hope that you may be able to either send in a cake or biscuits (shop bought or homemade). If homemade we ask that you provide us with the ingredients list for parents to view. If you would prefer to help out by asking any contacts you may know, ie local businesses of any offers that they may wish to donate— then this is greatly appreciated too!

The PTFA are hoping to offer a larger raffle this year with greater prizes! Any offers of donations towards this - including vouchers from local businesses would go a long way in helping our fayre to be the best it can be!

Please see the attached flyer from the PTFA at the end of this newsletter.

Gentle Reminders

Children do not need pencil cases in school. It is only the year 6 class that, if they so wish, can bring pencil cases to use in school to support transition to high school. Please also remember that children should not be wearing jewellery, make up, lip gloss/ lip care, expensive watches etc. In some classes, children are using these in class which is disruptive to their own and others learning. Teachers will take these items off your child that have not been authorised to be in school. Please reinforce these expectations with your child- and help us by every week/ or day checking your child's bag to ensure that items are not being put in to book bags.

Please also keep book bags/ rucksacks to a small size. Children do not need to be bringing in large bags. There is not enough room in school on coat pegs for large rucksacks. Thank you all

Wrap around Care

We currently have 2 adverts out for wrap around care staff. Please help us and share these amongst your own community groups and wider circles. As soon as we can appoint the required number of staff we will share the booking process and arrangements for the before and after school club offers. However without the staff, we are unable to confirm these arrangements. Please share far and wide and talk to us if you have any questions about the positions. Thank you!

Manners Focus

Our Mosley R's and school values are very important to us - not just for our children but also within our community. This week we have reminded children about the importance of good manners, respect and care to everyone around us, making sure that our inclusive school is one where manners and respect are valued and demonstrated by all. Look out for one of the special gold Mosley Manners stickers coming home with your child when they have demonstrated beautiful manners.

Please also email in - or tell your child's class teacher - and let us know if your child has demonstrated exceptionally good manners and respect to others. We always love to hear about these important life skills!

A positive, kind and caring attitude to others is important wherever we are and whoever we are with. On occasions, we may wish to speak to you if we feel that your child needs a little more support with this and discuss further ways that home and school can work together. Our school rules and values are important to us and we know they are to you too.

Thank you for helping everyone to Be The Best We Can Be!

Remember our Mosley R's.....

Ready

Respectful

Responsible

Restorative

School Values

Our school values were all chosen in the Summer of 2022 by our school community and we are proud of these.

They are celebrated in lots of ways throughout the week- assemblies, stickers, dojos and green cards, certificates, hot chocolate with the headteacher and the headteacher's very special golden book!

Happiness,

Independence,

Resilience,

Acceptance,

Honesty,

Kindness.



CONGRATULATIONS TO...

Rec	Tudor & Riley
Y1	Beatrice
Y2	Darcy
Y3	Bobby
Y4	Isaac W
Y5	Archie
Y6	Hunter

ATTENDANCE Target 97.5%

Year Group	This Week Attendance %	Days Missed This Week
Rec	98	3
Year 1	95.3	2.5
Year 2	93.1	7
Year 3	98	3
Year 4	95.5	7
Year 5	92	12.5
Year 6	100	0
Whole School	95.9	35



Whole School Year to Date Attendance

96.7%

1146 sessions missed so far this year

Diary Dates 2024 - 2025

Any changes made from the previous week will be marked in red

DATE DATE	YEAR YEAR	EVENT EVENT
Mon 16th June – Friday 20th June	ALL	Sports Week - Children in PE kit every day apart from Y3 and Y4 on Monday as on a trip.
Mon 16th Jun	Y3/Y4	WCET Violin and Ukulele Concert Birmingham Symphony Hall Birmingham
Monday 16th June	Rec, Y1 & Y2	Fathers Day Lunch for KS1 - Will be available to book on MCAS on Monday 2nd June
Thursday 19th June	ALL	Bring your scooter to school day - helmets MUST be worn.
Fri 20th Jun	ALL	Sports Day and Summer Fayre 1.15 onwards
Tues 1st July	Y3,Y4,Y5 & Y6	Seaside Day KS2 - (THIS IS A DATE CHANGE FROM 3RD JULY)
Wed 2nd July	Rec, Y1, Y2	Seaside Day EYFS and KS1
Fri 4th July	ALL	INSET Day - School Closed to Children
Wed 9th July	KS2	Summer Music Showcase 6pm
Fri 11th July	Y6	Year 6 Parent Lunch - Will be available to book on MCAS on Monday 30th June.
Tues 15th Jul	ALL	Move Up Morning and Meet the Teacher (3.30pm-4pm)
Fri 18th July	Y6	Year 6 Leavers Assembly 9.05am Break up for Summer!
Mon 21st Jul	ALL	INSET Day - School Closed to Children
Tues 22nd July– Fri 29th August	ALL	School Holidays!
Monday 1st September	ALL	INSET DAY– School closed to pupils
Tuesday 2nd September	ALL	Back to School!

DATE	YEAR	EVENT
Thursday 23rd October	ALL	Break up for half term
Friday 24th October	ALL	INSET DAY - School closed to pupils
Monday 3rd November	ALL	Back to School
Friday 19th December	ALL	Break up for Christmas holidays
Monday 5th January	ALL	INSET DAY – School closed to pupils
Tuesday 6th January	ALL	Back to School
Friday 13th February	ALL	Break up for half term
Monday 23rd February	ALL	Back to school
Friday 27th March	ALL	Break up for Easter Holidays
Monday 13th April	ALL	Back to school
Monday 4th May	ALL	Bank Holiday – School closed to pupils
Friday 22nd May	ALL	Break up for half term
Monday 1st June	ALL	Back to school
Friday 3rd July	ALL	INSET DAY - School closed to pupils
Friday 17th July	ALL	Break up for Summer
Monday 20th July	ALL	INSET DAY - School closed to pupils
Tuesday 21st July –Monday 31st August	ALL	Summer holidays!

95%	=	40 LESSONS MISSED EACH YEAR 8 days in total or 1 week and 3 days
90%	=	80 LESSONS MISSED EACH YEAR 16 days in total or 3 weeks and 1 day
85%	=	120 LESSONS MISSED EACH YEAR 24 days in total or 4 weeks and 4 days
80%	=	160 LESSONS MISSED EACH YEAR 32 days in total or 6 weeks and 2 days

ATTENDANCE MATTERS

WHAT DO YOUR ATTENDANCE FIGURES ACTUALLY MEAN?

BE SMART BE THERE!
Percentages based on 190 academic days



Mosley Academy

Summer Fair



Friday 20th June
3-5



Ice Cream, Candy Floss, Hot Food

Cakes, Teddy & Rainbow Tombola

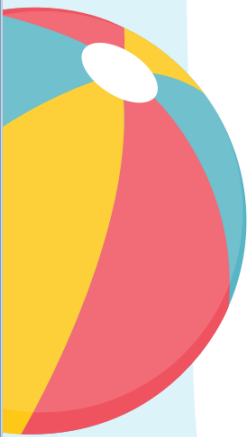
Refreshments & Snacks

All
Welcome

Bouncy Castle

Plants
donated by the Stone Family

Year 6, PTFA & Teacher
stalls plus many more fun
activities!





Inclusive Kids Clubs
Explore, learn, grow

Scan the QR code for more!



KIDS SUMMER CAMP

**FUN & CREATIVE
ACTIVITIES FOR BOYS
& GIRLS
RECEPTION - YEAR 6**



Week 1

**28TH JULY -
1ST AUGUST**

Week 2

**4TH - 8TH
AUGUST**

Admission

£25 a day or book a full week and get Friday for free!

Activities

- ✓ Outdoor crafts
- ✓ Outdoor games
- ✓ Drawing & painting
- ✓ Treasure hunts
- ✓ And many more!

Hosted at the Mosley Academy

Main Rd, Burton upon
Trent, Anslow, Burton-
on-Trent
DE13 9QD

8:30 - 15:30

Late pick up options
are available!

Registration Link

Inclusive-Kids-Clubs.classforkids.io

More Information www.inclusivekidsclubs.co.uk

activelearningsports

activelearningsports



HOLIDAY ACTIVITY CAMP

Have fun in the school holidays with your friends!



William Shrewsbury



Thomas Russell Infants



Mosley Academy

William S Camp
July 21st - Aug 8th

Thomas R Camp
July 21st Aug 22nd

Mosley Camp
Aug 11th-29th

Camp info
Times - 8.30am - 3.15pm
Late collection 4.15pm
All your child needs is a packed lunch drink and suitable clothing

Featuring

- Football
- Gymnastics
- Dodgeball
- Dance
- Arts & Crafts
- Axe throwing
- Scooter skills
- RC racing
- Archery
- Lego
- and much more!

If you receive this flyer you will be within 15 minutes drive of one of our venues

Apply: @activelearningsports.com

What Parents & Educators Need to Know about EMOJIS

WHAT ARE THE RISKS?

Emojis are more than playful expressions – they form a fast-evolving digital language that many adults struggle to decode. For young people, this 'secret code' is central to how they communicate identity, humour and emotions. With over 5 billion emojis sent daily on Facebook Messenger alone, understanding these symbols is key to engaging meaningfully with digital youth.



GENERATIONAL MISCOMMUNICATION

An emoji like 👍 (thumbs up emoji) might seem friendly to adults, but teens often interpret it as sarcastic or passive-aggressive. These differing interpretations can create confusion or unintended tension in cross-generational conversations.

SHIELDING BULLYING OR PEER PRESSURE

When embedded in emojis, mean-spirited jokes or exclusionary language can fly under the radar. Terms like 'mid' or 'delulu' may seem harmless, but they can be used to undermine peers in subtle ways.

RAPIDLY SHIFTING MEANINGS

Emoji meanings can change overnight. A person standing emoji (👤) once signified awkwardness but might now be repurposed for something entirely different. This ever-changing lexicon can leave adults in the dark and young people vulnerable to misunderstanding or misuse.

MASKING DISTRESS OR HARM

Some emojis are used to discreetly signal troubling behaviours. For instance, 🍂 (falling leaves emoji) or 💊 (pill emoji) might suggest drug use, while 🌪️ (wilted flower emoji) could hint at emotional struggles. Such usage can obscure serious issues, making them harder for trusted adults to detect.

NORMALISING RISKY BEHAVIOURS

Emojis can make harmful actions seem light-hearted or fashionable. Strings like 🔥👤 (fire + 'woozy' face + pill emojis) may appear humorous but can reference partying, intoxication or dangerous challenges, which might otherwise raise red flags.

Advice for Parents & Educators

LEARN THE LINGO

Stay updated with emoji trends and definitions using resources like emojipedia.org or Urban Dictionary. Knowing current meanings builds confidence when engaging with young people and helps spot potential concerns early.



CREATE SAFE SPACES FOR DISCUSSION

Encourage casual chats about emojis, online slang, memes, or social media trends. Showing interest without judgement reassures young people that they can talk about their digital world openly and safely.



ASK, DON'T ASSUME

Approach unfamiliar emojis with curiosity rather than suspicion. A light-hearted "What does 🍷 (juice box emoji) mean these days?" can open conversation and show that you respect their knowledge.



PRIORITISE TRUST OVER SURVEILLANCE

While parental controls and monitoring tools can be useful, emotional safety matters most. Be someone children and young people feel they can come to – not just someone who's watching them.



EMOJI CHEAT SHEET - The following slang terms and emojis are some common examples - please be aware this isn't an exhaustive list.

COMMON EMOJIS:

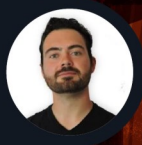
- 🤡 (Clown face) Foolishness or clowning around
- 🙄 (Pleading face) Over-affectionate or 'simping'
- 😎 (Cold face) Cool, stylish or ruthless
- 👁️ (Eyes) Watching drama unfold
- 🔥 (Hot face) Intense attraction or excitement
- 🐐 (Goat) Greatest of all time (G.O.A.T.)
- 😐 (Moai) Stone-faced, unbothered
- 💅 (Nails) Confidence, sassiness, or indifference
- 👑 (Crown) 'Slaying', as in doing great
- 🚩 (Triangular flag) Red flag; a warning sign about someone's behaviour

POTENTIALLY CONCERNING EMOJIS

- 🌽 (Ear of corn) Slang for pornography (avoids censorship algorithms)
- 🌪️ (Wilted flower) Often used to convey emotional struggle or sadness
- ❄️ (Snowflake, snowman, snow cloud) Can symbolise cocaine
- 🐍 (Snake) Can represent betrayal or being 'two-faced'
- 🗝️ (Key, lying face) Related to cocaine use
- 🔫 (Water pistol) Sometimes used to reference violence or self-harm
- 🍃 (Falling leaves, herb, maple leaf) Can symbolise cannabis
- ⚠️ (Warning) Used to emphasise drama, threats or emotional turmoil
- 💊 (Pill) May reference drug use or prescription misuse
- 🍜 (Steaming bowl) Refers to nudas ('noods' is an abbreviation of noodles)

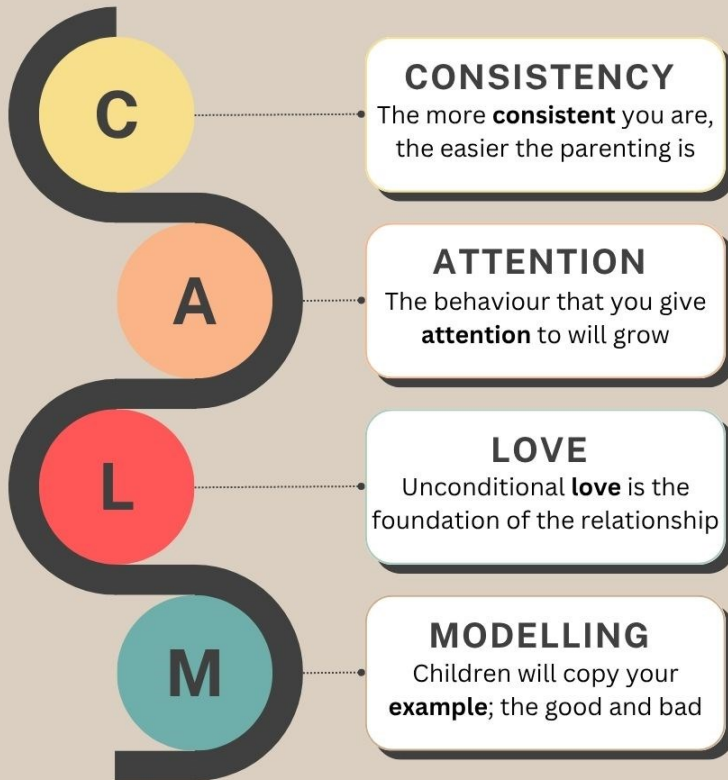
Meet Our Expert

Keith Broni is a globally renowned emoji expert and the Editor in Chief of emojipedia.org, the world's number one emoji resource. He has an MSc in Business Psychology from University College London and an MBA from Quantic School of Business and Technology.





CALM PARENTING TEENAGERS PROGRAMME



A free 6-week interactive course for parents or carers of 10-17 year olds, to develop new strategies to help you deal with the challenges of parenting a teenager!

Where & When?

East Staffordshire Family Hub
Waterloo Street
Burton-on-Trent DE14 2NJ

10am till 12pm
Every Wednesday from
10th September 2025 -
For 6 weeks

booking & further info



FRIDAY 20TH JUNE - 5PM-7PM

JTFESTIVAL

FREE
ENTRY



**BRING FAMILY
& FRIENDS**

Music - Dancing - Food &
Drinks -Stalls - and More!