



# The Mosley Academy Newsletter

Friday 10/01/2025

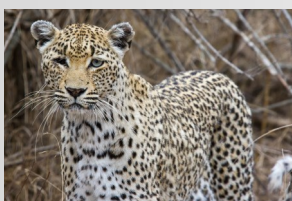


## Welcome Back To Everyone!

Welcome back to our children, staff and parents! It is so great to see everyone again and has been a really positive start to the term. Our first assembly of the year was based on our whole school motto of Be The Best You Can Be, our Mosley 4 R's and whole school values. The children know these so well and it was a joy to discuss these with the children as a whole school. We are continuing our focus on manners this term and now have some gold shiny personalised stickers for those children who demonstrate great manners. Please help us to reinforce these at home and remind the children that kindness, being nice and showing good manners is what we expect at all times- and is important throughout our whole lives. Classes have been busy this week with a focus on routines and expectations alongside getting stuck in to learning. Well done children, it has been really super to see so much focus and determination to your work.



Keep it up children, we are so proud of you!



## House Team Reward Afternoon

As mentioned in the newsletter before the holiday, the Leopards won the most green cards for this term! Congratulations! This afternoon all the Leopards are enjoying an afternoon of a film and hot chocolate.

## Celebration Assemblies

We love a Friday assembly. It is time to celebrate children's external achievements with everyone as well as star of the week, the class with the highest attendance and lots more. This morning we invited Mrs Pickering in to speak with the children about how she uses maths and other curriculum areas in her day-to-day role as a vet. Thank you so much for coming in to speak with the whole school about your career and for being an inspiration to be the best we can be!

## Young Voices

The T-Shirts and torches have arrived and we will be distributing these to the children on the day of the concert, so that they do not go missing before the event.

**Year 6 Homework—Commences from Monday 13th January 2025**

## **Forest School**

Forest School will be on Thursdays for Year 4. Please come to school in PE kit as normal and bring Forest School clothes in a bag.



## **Outdoor Play and Learning**

Now that we are really in to the winter months, please can **ALL** children have named wellies in school every day and a decent coat with your child's name inside.

If you would like to send your child in with some waterproof trousers or puddle suit then please do so in a plastic carrier bag inside their bags, ensuring that these are named too.

## **Year 2 Parent Lunch**

On Friday 24th January Year 2 parents are invited to join their child for lunch at 11:45am. The menu will be fish and chips with a vegetarian option, priced at £3.28 per adult.

Bookings via MCAS from Monday 13th January.

## **Staffing News**

This week we welcome to our school Mrs Taylor, who has joined us as the new Receptionist and Data Assistant in the office. Mrs Taylor has experienced a busy start to the new year but has embraced her new position.

We also welcome Danielle Smith, a highly experienced and skilled new staff member to our team. Mrs Smith will be working on a Thursday and Friday in Year 5 this half term. Please do say hi to her and welcome her to our school.

Next week we also welcome a third year teaching student from York University. Miss Parish will be working alongside Miss Hardwick in Class 3 and we know they will make a great team in there!

## **Staffordshire Admissions –Reception Places 2025 and Junior Transfer Places**

Please see the link below to apply for your child's place for Reception 2025. Our tours have been so popular it has been a real honour to welcome so many parents to our school and to showcase everything that we are so proud of at Mosley!

The deadline is January 15th for a September start. [Admission to primary and middle schools - Staffordshire County Council](#)

## **SCHOOL DISCO—CHANGE OF DATE**

Please note the change of date for the next school disco. It will now be on Thursday 13th February. Timings will be as follows:

3:30pm-4:40pm Reception and KS1

4:45pm-6:00pm KS2

Any help on the night will be welcome. Please let the school office/PTFA know. More details to follow.

The theme is friendship, kindness and love.



STARS

OF

THE

WEEK!

## CONGRATULATIONS TO...

Rec	Christian (Tudor)
Y1	Diana
Y2	Jack M
Y3	Eysa
Y4	Vika
Y5	Mollie
Y6	Oliver

## ATTENDANCE Target 97.5%

Year Group	This Week Attendance %	Days Missed This Week
Rec	100	0
Year 1	100	0
Year 2	96.7	4
Year 3	99.2	1
Year 4	100	0
Year 5	96.5	4.5
Year 6	97.2	3.5
<b>Whole School</b>	<b>98.4</b>	<b>13</b>



Staffordshire County Council

**HERE EVERY DAY READY ON TIME**

Visit [staffordshire.gov.uk/littleheroes](http://staffordshire.gov.uk/littleheroes)

## Whole School Year to Date Attendance

# 96.9%

517 days missed so far this year



# Diary Dates 2024 - 2025

Any changes made from the previous week will be marked in red

DATE	YEAR	EVENT
Fri 24th Jan	Y2	Y2 Parent Lunch
Fri 31st Jan	Y3,4,5,6	Young Voices (those signed up only)
Mon 3rd Feb - Fri 7th Feb	ALL	Children's Mental Health Week
Tues 11th Feb	ALL	Internet Safety Day
<b>Thurs 13th Feb</b>	<b>ALL</b>	<b>School Disco</b>
Fri 14th Feb	ALL	Break Up for Half Term
Mon 17th Feb - Fri 21st Feb	ALL	Half Term
Mon 24th Feb	ALL	Return to School
Fri 28th Feb	Y3	Y3 Parent Lunch
Thurs 6th Mar	ALL	World Book Day
Fri 14th Mar	Y4	Y4 Parent Lunch
Fri 4th Apr	Y5	Y5 Parent Lunch
Fri 11th Apr	ALL	Break Up for Easter
Mon 14th Apr - Fri 25th Apr	ALL	Easter Holidays
Mon 28th Apr	ALL	Return to School

DATE	YEAR	EVENT
Fri 2nd May	ALL	May Day Celebrations
Mon 5th May	ALL	May Bank Holiday - School Closed
Mon 12th May - Fri 16th May	Y6	SATs Week
Fri 23rd May	ALL	Break Up for Half Term
Mon 26th May - Fri 30th May	ALL	Half Term
Mon 2nd Jun	ALL	Return to School
Mon 16th Jun	Y3/Y4	WCET Violin and Ukulele Concert, Birmingham
Fri 20th Jun	ALL	Sports Day and Summer Fair
Wed 2nd Jul	Rec, Y1, Y2	Seaside Day EYFS and KS1
Thurs 3rd Jul	Y3,4,5, 6	Seaside Day KS2
Fri 4th Jul	ALL	INSET Day - School Closed to Children
Wed 9th Jul	KS2	Summer Music Showcase
Tues 15th Jul	ALL	Move Up Morning and Meet the Teacher (3.30pm-4pm)
Fri 18th Jul	ALL	Break Up for Summer Holidays
Mon 21st Jul	ALL	INSET Day - School Closed to Children
Tues 22nd Jul - Fri 29th Aug	ALL	Summer Holidays

<b>95%</b>	<b>=</b>	<b>40 LESSONS MISSED EACH YEAR</b> 8 days in total or 1 week and 3 days	<b>ATTENDANCE MATTERS</b>  <b>WHAT DO YOUR ATTENDANCE FIGURES ACTUALLY MEAN?</b>  <b>BE SMART BE THERE!</b> <small>Percentages based on 190 academic days</small>
<b>90%</b>	<b>=</b>	<b>80 LESSONS MISSED EACH YEAR</b> 16 days in total or 3 weeks and 1 day	
<b>85%</b>	<b>=</b>	<b>120 LESSONS MISSED EACH YEAR</b> 24 days in total or 4 weeks and 4 days	
<b>80%</b>	<b>=</b>	<b>160 LESSONS MISSED EACH YEAR</b> 32 days in total or 6 weeks and 2 days	

# Quit for a smokefree household

Let us help you **create a smokefree household** to protect your loved ones!

## What we can offer you:

- Free nicotine replacement therapy (NRT) and vapes to support your journey
- Weekly non judgemental group sessions or one to one appointments for 12 weeks
- Support with how to manage cravings and withdrawal symptoms

## Who can we support?

- If you live in Staffordshire\*
  - If you smoke tobacco products
  - If you are pregnant, or have had a pregnancy within the last 6 months
  - If you live with someone who is pregnant, or has had a pregnancy within the last 6 months
    - If you live with a child aged 0-3 years old



## What do I do now?

Tel: **0333 005 0095**

Email: **eh.staffs@nhs.net**

Visit: **staffordshire.everyonehealth.co.uk**



Funded by



**everyonehealth**  
because everyone matters

\*excluding Stoke on Trent

# How can smoking harm you and your family?

## Smoking can cause serious harmful effects to the whole household.



Tobacco smoke can contain over 4000 harmful chemicals, which are inhaled through the cigarette. Secondhand smoke exposure can just be as harmful to others around you, especially children.

### Short term second hand smoke exposure

- Eye irritation
- Headaches
- Coughs
- Sore Throat
- Dizziness
- Nausea
- Decline in lung function in asthmatics

### Long term second hand smoke exposure

Lung Cancer	Increase by 20-30% in non smokers
Coronary Heart Disease	Increase 25-35% in non smokers
Sudden Infant Death Syndrome (SIDS)	45% more likely
Stroke	Increased risk by 20-30%
Asthma/Respiratory illness in children	Increased risk by 30%
Meningitis (Invasive meningococcal disease)	Risk is doubled

- **Children** are 4 times as likely to take up smoking if they live in a smoking household
- **Pets** - Secondhand smoke can affect pets and can cause breathing problems, or make your pet's existing breathing problems worse. Due to the toxic gases, this will increase certain types of cancers, such as lung, nose, mouth cancers and lymphoma.

Funded by

